

PACO21924

Product Information

Size:

100ul

Reactivity:

Human, Mouse

Source:

Rabbit

Isotype:

IgG

Applications:

ELISA, WB

Recommended dilutions:

ELISA:1:2000-1:10000, WB:1:500-1:3000

Protein Background:

Mediates activation of NF-kappa-B. May play a role in T-cell activation. Ota T. , Nat. Genet. 36:40-45(2004).

Gene ID:

RELT

Uniprot

Q969Z4

Synonyms:

Tumor necrosis factor receptor superfamily member 19L [Precursor]; Receptor expressed in lymphoid tissues; RELT; TNFRSF19L;

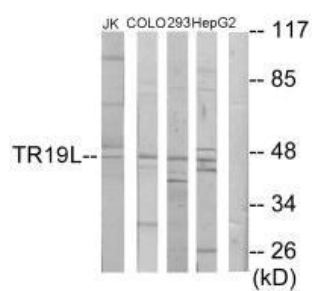
Immunogen:

Synthesized peptide derived from C-terminal of human TR19L.

Storage:

Rabbit IgG in phosphate buffered saline (without Mg²⁺ and Ca²⁺), pH 7.4, 150mM NaCl, 0.02% sodium azide and 50% glycerol.

Product Images



Western blot analysis of extracts from Jurkat cells, COLO205 cells, 293 cells and HepG2 cells, using TR19L antibody.