

# CDKL2 Antibody



PACO21914

---

## Product Information

**Size:**

100ul

**Reactivity:**

Human

**Source:**

Rabbit

**Isotype:**

**Applications:**

ELISA, WB

**Recommended dilutions:**

ELISA:1:2000-1:10000, WB:1:500-1:3000

**Protein Background:**

**Gene ID:**

CDKL2

**Uniprot**

Q92772

**Synonyms:**

Cyclin-dependent kinase-like 2; EC 2.7.11.22; Serine/threonine-protein kinase KKIAMRE; Protein kinase p56 KKIAMRE; CDKL2

**Immunogen:**

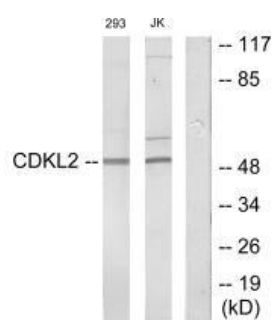
Synthesized peptide derived from internal of human CDKL2.

**Storage:**

Rabbit IgG in phosphate buffered saline (without Mg<sup>2+</sup> and Ca<sup>2+</sup>), pH 7.4, 150mM NaCl, 0.02% sodium azide and 50% glycerol.

## Product Images

---



Western blot analysis of extracts from 293 cells and Jurkat cells, using CDKL2 antibody.