

### Product Information

**Size:**

100ul

**Reactivity:**

Human

**Source:**

Rabbit

**Isotype:**

IgG

**Applications:**

ELISA, WB

**Recommended dilutions:**

ELISA:1:2000-1:10000, WB:1:500-1:3000

**Protein Background:**

The protein encoded by this gene belongs to the Ser/Thr protein kinase family, and protein kinase superfamily involved in signal transduction pathways. This gene is closely linked to DRD2 gene (GeneID:1813) on chr 11, and a well studied restriction fragment length polymorphism (RFLP) designated TaqIA, was originally associated with the DRD2 gene, however, later was determined to be located in exon 8 of ANKK1 gene (PMIDs: 18621654, 15146457), where it causes a nonconservative amino acid, substitution. It is not clear if this gene plays any role in neuropsychiatric disorders previously associated with Taq1A RFLP. Dubertret C. , Schizophr. Res. 67:75-85(2004).

**Gene ID:**

ANKK1

**Uniprot**

Q8NFD2

**Synonyms:**

Ankyrin repeat and protein kinase domain-containing protein 1; EC 2.7.11.1; Protein kinase PKK2; X-kinase; Sugen kinase 288

**Immunogen:**

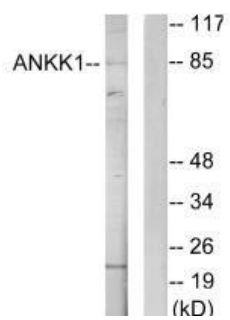
Synthesized peptide derived from internal of human ANKK1.

**Storage:**

Rabbit IgG in phosphate buffered saline (without Mg<sup>2+</sup> and Ca<sup>2+</sup>), pH 7.4, 150mM NaCl, 0.02% sodium azide and 50% glycerol.

## Product Images

---



Western blot analysis of extracts from HeLa cells, using ANKK1 antibody.