

RGAG1 Antibody



PACO21898

Product Information

Size:

100ul

Reactivity:

Human, Mouse

Source:

Rabbit

Isotype:

IgG

Applications:

ELISA, WB

Recommended dilutions:

ELISA:1:2000-1:10000, WB:1:500-1:3000

Protein Background:

Nagase T. , DNA Res. 7:65-73(2000).

Gene ID:

RTL9

Uniprot

Q8NET4

Synonyms:

Retrotransposon gag domain-containing protein 1; BJ-HCC-23 tumor antigen; RGAG1; KIAA1318;

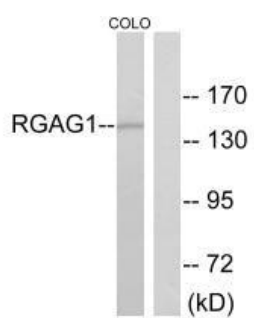
Immunogen:

Synthesized peptide derived from C-terminal of human RGAG1.

Storage:

Rabbit IgG in phosphate buffered saline (without Mg²⁺ and Ca²⁺), pH 7.4, 150mM NaCl, 0.02% sodium azide and 50% glycerol.

Product Images



Western blot analysis of extracts from COLO cells, using RGAG1 antibody.