

MAGI2 Antibody



PACO21890

Product Information

Size:

100ul

Reactivity:

Human, Mouse, Rat

Source:

Rabbit

Isotype:**Applications:**

ELISA, WB

Recommended dilutions:

ELISA:1:2000-1:10000, WB:1:500-1:3000

Protein Background:**Gene ID:**

MAGI2

Uniprot

Q86UL8

Synonyms:

Atrophin-1 interacting protein 1; Atrophin-1 interacting protein A; KIAA0705; MAGI-2; MAGI2

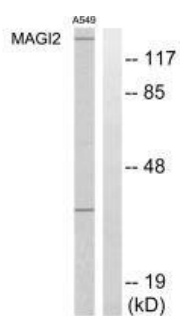
Immunogen:

Synthesized peptide derived from internal of human MAGI2.

Storage:

Rabbit IgG in phosphate buffered saline (without Mg²⁺ and Ca²⁺), pH 7.4, 150mM NaCl, 0.02% sodium azide and 50% glycerol.

Product Images



Western blot analysis of extracts from HT-29 cells, using MAGI2 antibody.