

CTU1 Antibody



PACO21886

Product Information

Size:

100ul

Reactivity:

Human

Source:

Rabbit

Isotype:

Protein Background:

Gene ID:

CTU1

Uniprot

Q7Z7A3

Synonyms:

Cancer-associated gene protein; ATP-binding domain-containing protein 3; ATPBD3;

Applications:

ELISA, WB

Immunogen:

Synthesized peptide derived from C-terminal of human ATBP3.

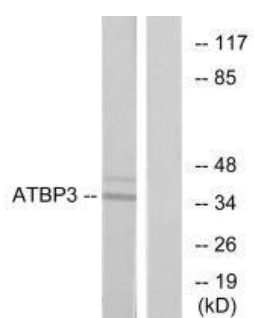
Recommended dilutions:

ELISA:1:2000-1:10000, WB:1:500-1:3000

Storage:

Rabbit IgG in phosphate buffered saline (without Mg²⁺ and Ca²⁺), pH 7.4, 150mM NaCl, 0.02% sodium azide and 50% glycerol.

Product Images



Western blot analysis of extracts from LOVO cells, using ATBP3 antibody.