

STRADA Antibody



PACO21884

Product Information

Size:

100ul

Reactivity:

Human, Mouse

Source:

Rabbit

Isotype:

Applications:

ELISA, WB

Recommended dilutions:

ELISA:1:2000-1:10000, WB:1:500-1:3000

Protein Background:

Gene ID:

STRADA

Uniprot

Q7RTN6

Synonyms:

STE20-related adapter protein; STRAD alpha; Serologically defined breast cancer antigen NY-BR-96; STRAD; LYK5

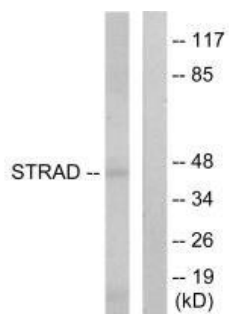
Immunogen:

Synthesized peptide derived from internal of human STRAD.

Storage:

Rabbit IgG in phosphate buffered saline (without Mg²⁺ and Ca²⁺), pH 7.4, 150mM NaCl, 0.02% sodium azide and 50% glycerol.

Product Images



Western blot analysis of extracts from HepG2 cells, using STRAD antibody.