

# TTC23 Antibody



PACO21878

---

## Product Information

**Size:**

100ul

**Reactivity:**

Human

**Source:**

Rabbit

**Isotype:**

**Applications:**

ELISA, WB

**Recommended dilutions:**

ELISA:1:2000-1:10000, WB:1:500-1:3000

**Protein Background:**

**Gene ID:**

TTC23

**Uniprot**

Q5W5X9

**Synonyms:**

TPR repeat protein 23; Tetratricopeptide repeat protein 23; Cervical cancer proto-oncogene 8 protein; HCC-8; HCC8

**Immunogen:**

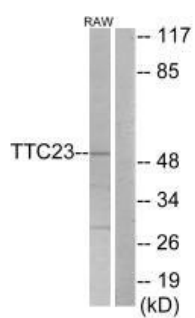
Synthesized peptide derived from internal of human TTC23.

**Storage:**

Rabbit IgG in phosphate buffered saline (without Mg<sup>2+</sup> and Ca<sup>2+</sup>), pH 7.4, 150mM NaCl, 0.02% sodium azide and 50% glycerol.

## Product Images

---



Western blot analysis of extracts from RAW264.7 cells, using TTC23 antibody.