

GPR68 Antibody



PACO21860

Product Information

Size:

100ul

Reactivity:

Human, Mouse

Source:

Rabbit

Isotype:**Applications:**

ELISA, WB

Recommended dilutions:

ELISA:1:2000-1:10000, WB:1:500-1:3000

Protein Background:**Gene ID:**

GPR68

Uniprot

Q15743

Synonyms:

Sphingosylphosphorylcholine receptor; Ovarian cancer G-protein coupled receptor 1; OGR-1; G-protein coupled receptor 68; GPR12A

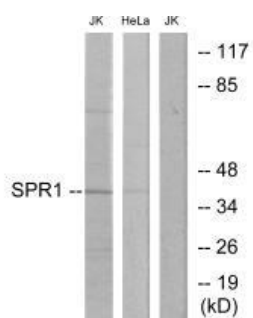
Immunogen:

Synthesized peptide derived from internal of human SPR1.

Storage:

Rabbit IgG in phosphate buffered saline (without Mg²⁺ and Ca²⁺), pH 7.4, 150mM NaCl, 0.02% sodium azide and 50% glycerol.

Product Images



Western blot analysis of extracts from Jurkat cells and HeLa cells, using SPR1 antibody.