

PACO21846

---

## Product Information

**Size:**

100ul

**Reactivity:**

Human

**Source:**

Rabbit

**Isotype:**

IgG

**Applications:**

ELISA, WB

**Recommended dilutions:**

ELISA:1:2000-1:10000, WB:1:500-1:3000

**Protein Background:**

Key enzyme in the regulation of glycerol uptake and metabolism By similarity. Sargent C. A. , Hum. Mol. Genet. 3:1317-1324(1994).

**Gene ID:**

GK2

**Uniprot**

Q14410

**Synonyms:**

Glycerol kinase; testis specific 2; EC 2.7.1.30; ATP: glycerol 3-phosphotransferase; Glycerokinase

**Immunogen:**

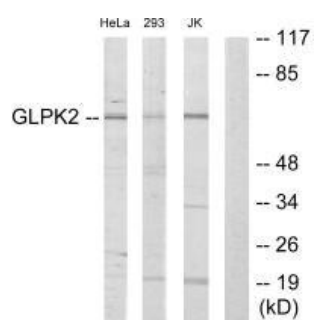
Synthesized peptide derived from internal of human GLPK2.

**Storage:**

Rabbit IgG in phosphate buffered saline (without Mg<sup>2+</sup> and Ca<sup>2+</sup>), pH 7.4, 150mM NaCl, 0.02% sodium azide and 50% glycerol.

## Product Images

---



Western blot analysis of extracts from HeLa cells, 293 cells and Jurkat cells, using GLPK2 antibody.