

SMAD4 Antibody



PACO21837

Product Information

Size:

100ul

Reactivity:

Human, Mouse, Rat

Source:

Rabbit

Isotype:

IgG

Applications:

ELISA, WB

Recommended dilutions:

ELISA:1:2000-1:10000, WB:1:500-1:3000

Protein Background:

Gene ID:

SMAD4

Uniprot

Q13485

Synonyms:

SMAD 4; Mothers against decapentaplegic homolog 4; Mothers against DPP homolog 4; Deletion target in pancreatic carcinoma 4; hSMAD4

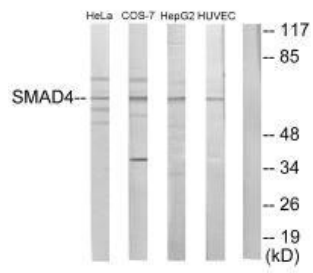
Immunogen:

Synthesized peptide derived from internal of human Smad4.

Storage:

Rabbit IgG in phosphate buffered saline (without Mg²⁺ and Ca²⁺), pH 7.4, 150mM NaCl, 0.02% sodium azide and 50% glycerol.

Product Images



Western blot analysis of extracts from HeLa cells, COS-7 cells, HepG2 cells and HUVEC cells, using Smad4 antibody.