

PACO21829

Product Information

Size:

100ul

Reactivity:

Human, Mouse, Rat

Source:

Rabbit

Isotype:

IgG

Applications:

ELISA, WB

Recommended dilutions:

ELISA:1:2000-1:10000, WB:1:500-1:3000

Protein Background:

One of the multiple factors required for polyadenylation and 3'-end cleavage of mammalian pre-mRNAs. May be responsible for the interaction of CSTF with other factors to form a stable complex on the pre-mRNA. Deloukas P. , Nature 414:865-871(2001).

Gene ID:

CSTF1

Uniprot

Q05048

Synonyms:

CF-1 50 kDa subunit; CSTF 50 kDa subunit; CSTF1; Cleavage stimulation factor; 50 kDa subunit

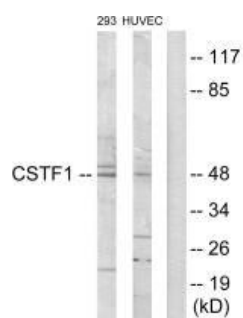
Immunogen:

Synthesized peptide derived from N-terminal of human CSTF1.

Storage:

Rabbit IgG in phosphate buffered saline (without Mg²⁺ and Ca²⁺), pH 7.4, 150mM NaCl, 0.02% sodium azide and 50% glycerol.

Product Images



Western blot analysis of extracts from 293 cells and HUVEC cells, using CSTF1 antibody.