

PACO21824

---

## Product Information

**Size:**

100ul

**Reactivity:**

Human, Mouse, Rat

**Source:**

Rabbit

**Isotype:**

IgG

**Applications:**

ELISA, WB

**Recommended dilutions:**

ELISA:1:2000-1:10000, WB:1:500-1:3000

**Protein Background:**

Transcriptional regulator that binds the cAMP response element (CRE), a sequence present in many viral and cellular promoters. Isoforms are either transcriptional activators or repressors. Plays a role in spermatogenesis and is involved in spermatid maturation By similarity. Meyer T. E. , Nucleic acid, Res. 20:6106-6106(1992).

**Gene ID:**

CREM

**Uniprot**

Q03060

**Synonyms:**

CREM-alpha; cAMP-responsive element modulator; cAMP-responsive element modulator; alpha isoform CREM; CREM-beta

**Immunogen:**

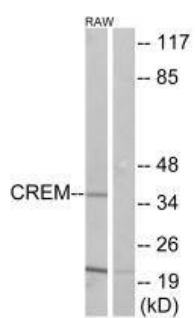
Synthesized peptide derived from internal of human CREM.

**Storage:**

Rabbit IgG in phosphate buffered saline (without Mg<sup>2+</sup> and Ca<sup>2+</sup>), pH 7.4, 150mM NaCl, 0.02% sodium azide and 50% glycerol.

## Product Images

---



Western blot analysis of extracts from K562 cells, using CREM antibody.