

# PFKP Antibody



PACO21818

---

## Product Information

**Size:**

100ul

**Reactivity:**

Human, Mouse, Rat

**Source:**

Rabbit

**Isotype:**

**Protein Background:**

**Gene ID:**

PFKP

**Uniprot**

Q01813

**Synonyms:**

6-phosphofructokinase type C; 6-phosphofructokinase; platelet type; EC 2.7.1.11; K6PP

**Applications:**

ELISA, WB

**Immunogen:**

Synthesized peptide derived from internal of human K6PP.

**Recommended dilutions:**

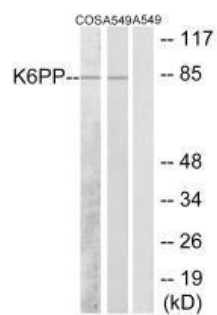
ELISA:1:2000-1:10000, WB:1:500-1:3000

**Storage:**

Rabbit IgG in phosphate buffered saline (without Mg<sup>2+</sup> and Ca<sup>2+</sup>), pH 7.4, 150mM NaCl, 0.02% sodium azide and 50% glycerol.

## Product Images

---



Western blot analysis of extracts from COS-7 cells and A549 cells, using K6PP antibody.