

Product Information

Size:

100ul

Reactivity:

Human, Mouse, Rat

Source:

Rabbit

Isotype:

Applications:

ELISA, WB

Recommended dilutions:

ELISA:1:2000-1:10000, WB:1:500-1:3000

Protein Background:

Gene ID:

DGKE

Uniprot

P52429

Synonyms:

Diacylglycerol kinase epsilon; EC 2.7.1.107; Diglyceride kinase epsilon; DGK-epsilon; DAG kinase epsilon

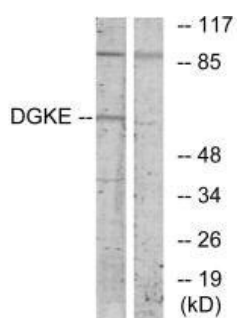
Immunogen:

Synthesized peptide derived from internal of human DGKE.

Storage:

Rabbit IgG in phosphate buffered saline (without Mg²⁺ and Ca²⁺), pH 7.4, 150mM NaCl, 0.02% sodium azide and 50% glycerol.

Product Images



Western blot analysis of extracts from K562 cells, using DGKE antibody.