

# HOXA1 Antibody



PACO21785

---

## Product Information

**Size:**

100ul

**Reactivity:**

Human, Mouse, Rat

**Source:**

Rabbit

**Isotype:**

**Protein Background:**

**Gene ID:**

HOXA1

**Uniprot**

P49639

**Synonyms:**

Homeobox protein Hox-A1; Hox-1F; HOXA1; HOX1F;

**Applications:**

ELISA, WB

**Immunogen:**

Synthesized peptide derived from internal of human HOXA1.

**Recommended dilutions:**

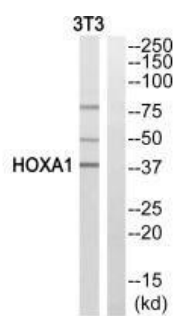
ELISA:1:2000-1:10000, WB:1:500-1:3000

**Storage:**

Rabbit IgG in phosphate buffered saline (without Mg<sup>2+</sup> and Ca<sup>2+</sup>), pH 7.4, 150mM NaCl, 0.02% sodium azide and 50% glycerol.

## Product Images

---



Western blot analysis of extracts from COLO cells, HeLa/ cells and 293 cells, using HOXA1 antibody.