

MAP2K4 Antibody



PACO21781

Product Information

Size:

100ul

Reactivity:

Human, Mouse, Rat

Source:

Rabbit

Isotype:

IgG

Applications:

ELISA, WB

Recommended dilutions:

ELISA:1:2000-1:10000, WB:1:500-1:3000

Protein Background:**Gene ID:**

MAP2K4

Uniprot

P45985

Synonyms:

C-JUN N-terminal kinase kinase 1; Dual specificity mitogen-activated protein kinase kinase 4; EC 2.7.12.2; JNK activating kinase 1; JNK kinase 1

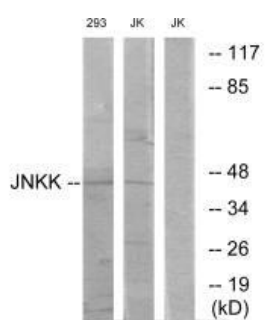
Immunogen:

Synthesized peptide derived from internal of human JNKK.

Storage:

Rabbit IgG in phosphate buffered saline (without Mg²⁺ and Ca²⁺), pH 7.4, 150mM NaCl, 0.02% sodium azide and 50% glycerol.

Product Images



Western blot analysis of extracts from Jurkat cells and 293 cells, using JNKK antibody.