

CUX1 Antibody



PACO21776

Product Information

Size:

100ul

Reactivity:

Human, Mouse

Source:

Rabbit

Isotype:**Protein Background:****Gene ID:**

CUX1

Uniprot

P39880

Synonyms:

CCAAT displacement protein; CDP; Cut-like 1;

Applications:

ELISA, WB

Immunogen:

Synthesized peptide derived from N-terminal of human CUTL1.

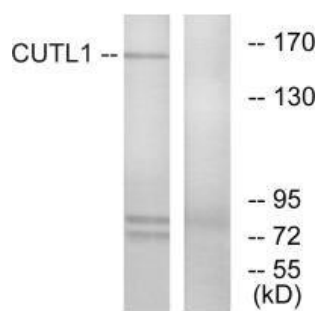
Recommended dilutions:

ELISA:1:2000-1:10000, WB:1:500-1:3000

Storage:

Rabbit IgG in phosphate buffered saline (without Mg²⁺ and Ca²⁺), pH 7.4, 150mM NaCl, 0.02% sodium azide and 50% glycerol.

Product Images



Western blot analysis of extracts from K562 cells, using CUTL1 antibody.