

TEAD1 Antibody



PACO21761

Product Information

Size:

100ul

Reactivity:

Human

Source:

Rabbit

Isotype:

IgG

Applications:

ELISA, WB

Recommended dilutions:

ELISA:1:2000-1:10000, WB:1:500-1:3000

Protein Background:

Gene ID:

TEAD1

Uniprot

P28347

Synonyms:

AA; atrophica areata; peripapillary chorioretinal degeneration; NTEF-1; Protein GT-IIC

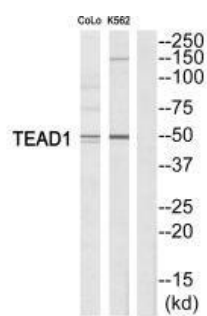
Immunogen:

Synthesized peptide derived from Internal of human TEAD1.

Storage:

Rabbit IgG in phosphate buffered saline (without Mg²⁺ and Ca²⁺), pH 7.4, 150mM NaCl, 0.02% sodium azide and 50% glycerol.

Product Images



Western blot analysis of extracts from COLO205/K562 cells, using TEAD1 antibody.