

ATF3 Antibody



PACO21745

Product Information

Size:

100ul

Reactivity:

Human, Mouse, Rat

Source:

Rabbit

Isotype:

Applications:

ELISA, WB

Recommended dilutions:

ELISA:1:2000-1:10000, WB:1:500-1:3000

Protein Background:

Gene ID:

ATF3

Uniprot

P18847

Synonyms:

Cyclic AMP-dependent transcription factor ATF-3; Activating transcription factor 3; ATF3;

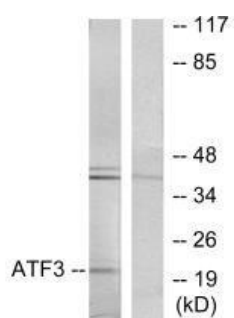
Immunogen:

Synthesized peptide derived from internal of human ATF3.

Storage:

Rabbit IgG in phosphate buffered saline (without Mg²⁺ and Ca²⁺), pH 7.4, 150mM NaCl, 0.02% sodium azide and 50% glycerol.

Product Images



Western blot analysis of extracts from RAW264.7 cells, using ATF3 antibody.