

ZNF18 Antibody



PACO21736

Product Information

Size:

100ul

Reactivity:

Human, Mouse, Rat

Source:

Rabbit

Isotype:

Applications:

ELISA, WB

Recommended dilutions:

ELISA:1:2000-1:10000, WB:1:500-1:3000

Protein Background:

Gene ID:

ZNF18

Uniprot

P17022

Synonyms:

Zinc finger protein 18; Zinc finger protein KOX11; Heart development-specific gene 1 protein; Zinc finger protein with KRAB and SCAN domains 6; ZNF18

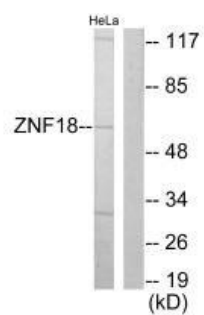
Immunogen:

Synthesized peptide derived from internal of human ZNF18.

Storage:

Rabbit IgG in phosphate buffered saline (without Mg²⁺ and Ca²⁺), pH 7.4, 150mM NaCl, 0.02% sodium azide and 50% glycerol.

Product Images



Western blot analysis of extracts from HeLa cells, using ZNF18 antibody.