

PACO21702

Product Information

Size:

100ul

Reactivity:

Human

Source:

Rabbit

Isotype:

Applications:

ELISA, WB

Recommended dilutions:

ELISA:1:2000-1:10000, WB:1:500-1:3000

Protein Background:

Gene ID:

TAF5L

Uniprot

O75529

Synonyms:

TAF5-like RNA polymerase II p300/CBP-associated factor-associated factor 65 kDa subunit 5L; PCAF-associated factor 65 beta; PAF65-beta; TAF5L; PAF65B

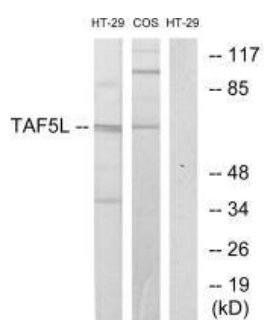
Immunogen:

Synthesized peptide derived from internal of human TAF5L

Storage:

Rabbit IgG in phosphate buffered saline (without Mg²⁺ and Ca²⁺), pH 7.4, 150mM NaCl, 0.02% sodium azide and 50% glycerol.

Product Images



Western blot analysis of extracts from HT-29 cells and COS-7 cells, using TAF5L antibody.