

PACO21699

---

## Product Information

**Size:**

100ul

**Reactivity:**

Human

**Source:**

Rabbit

**Isotype:**

IgG

**Applications:**

ELISA, WB

**Recommended dilutions:**

ELISA:1:2000-1:10000, WB:1:500-1:3000

**Protein Background:**

Sodium-independent, high affinity transport of large neutral amino acid, . Has narrower substrate selectivity compared to SLC7A5 and SLC7A8 and mainly transports branched-chain amino acid, and phenylalanine. Plays a role in the development of human prostate cancer, from prostatic intraepithelial neoplasia to invasive prostate cancer. Babu E. , J. Biol. Chem. 278:43838-43845(2003).

**Gene ID:**

SLC43A1

**Uniprot**

O75387

**Synonyms:**

L-type amino acid, transporter 3; LAT3; large neutral amino acid, transporter small subunit 3; prostate cancer overexpressed gene 1 protein; solute carrier family 43 member 1

**Immunogen:**

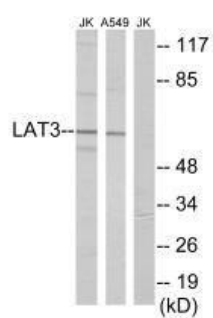
Synthesized peptide derived from internal of human LAT3.

**Storage:**

Rabbit IgG in phosphate buffered saline (without Mg<sup>2+</sup> and Ca<sup>2+</sup>), pH 7.4, 150mM NaCl, 0.02% sodium azide and 50% glycerol.

## Product Images

---



Western blot analysis of extracts from Jurkat cells and A549 cells, using LAT3 antibody.