

# TBX10 Antibody



PACO21698

---

## Product Information

**Size:**

100ul

**Reactivity:**

Human

**Source:**

Rabbit

**Isotype:**

IgG

**Applications:**

ELISA, WB

**Recommended dilutions:**

ELISA:1:2000-1:10000, WB:1:500-1:3000

**Protein Background:**

Probable transcriptional regulator involved in developmental processes. The MGC Project Team, Genome Res. 14:2121-2127(2004).

**Gene ID:**

TBX10

**Uniprot**

O75333

**Synonyms:**

T-box transcription factor TBX10; T-box protein 10; TBX10; TBX7;

**Immunogen:**

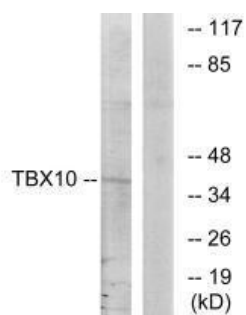
Synthesized peptide derived from internal of human TBX10.

**Storage:**

Rabbit IgG in phosphate buffered saline (without Mg<sup>2+</sup> and Ca<sup>2+</sup>), pH 7.4, 150mM NaCl, 0.02% sodium azide and 50% glycerol.

## Product Images

---



Western blot analysis of extracts from HT-29 cells, using TBX10 antibody.