

PFKFB2 Antibody



PACO21696

Product Information

Size:

100ul

Reactivity:

Human

Source:

Rabbit

Isotype:

IgG

Applications:

ELISA, WB

Recommended dilutions:

ELISA:1:2000-1:10000, WB:1:500-1:3000

Protein Background:

Synthesis and degradation of fructose 2,6-bisphosphate. Soejima H. , Genomics 74:115-120(2001).

Gene ID:

PFKFB2

Uniprot

O60825

Synonyms:

6-phosphofructo-2-kinase; 6-phosphofructo-2-kinase/fructose-2; 6-biphosphatase 2; 6PF-2-K/Fru-2; 6-P2ase heart-type isozyme

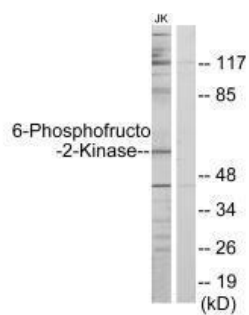
Immunogen:

Synthesized peptide derived from N-terminal of human PFKFB2.

Storage:

Rabbit IgG in phosphate buffered saline (without Mg²⁺ and Ca²⁺), pH 7.4, 150mM NaCl, 0.02% sodium azide and 50% glycerol.

Product Images



Western blot analysis of extracts from Jurkat cells, using PFKFB2 antibody.