

# PSCA Antibody



PACO21660

---

## Product Information

**Size:**

100ul

**Reactivity:**

Human, Mouse

**Source:**

Rabbit

**Isotype:**

IgG

**Applications:**

ELISA, WB

**Recommended dilutions:**

ELISA:1:2000-1:10000, WB:1:500-1:3000

**Protein Background:**

May be involved in the regulation of cell proliferation. Has a cell-proliferation inhibition activity in vitro.

**Gene ID:**

PSCA

**Uniprot**

O43653

**Synonyms:**

PSCA;

**Immunogen:**

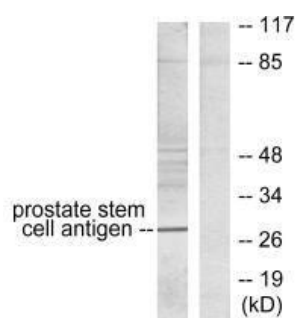
Synthesized peptide derived from human Prostate Stem Cell Antigen antibody.

**Storage:**

Rabbit IgG in phosphate buffered saline (without Mg<sup>2+</sup> and Ca<sup>2+</sup>), pH 7.4, 150mM NaCl, 0.02% sodium azide and 50% glycerol.

## Product Images

---



Western blot analysis of extracts from mouse prostate, using Prostate Stem Cell Antigen antibody.