

Product Information

Size:

100ul

Reactivity:

Human, Mouse, Rat

Source:

Rabbit

Isotype:

IgG

Applications:

ELISA, WB

Recommended dilutions:

ELISA:1:2000-1:10000, WB:1:500-1:3000

Protein Background:

Growth factor that plays an essential role in the regulation of embryonic development, cell proliferation, cell migration, survival and chemotaxis. Potent mitogen for cells of mesenchymal origin. Required for normal proliferation and recruitment of pericytes and vascular smooth muscle cells in the central nervous system, skin, lung, heart and placenta. Required for normal blood vessel development, and for normal development of kidney glomeruli. Plays an important role in wound healing. Signaling is modulated by the formation of heterodimers with PDGFA By similarity.

Gene ID:

PDGFB

Uniprot

P01127

Synonyms:

PDGF2; ONCOGENE SIS; PDGF B CHAIN; PLATELET-DERIVED GROWTH FACTOR B CHAIN; SIMIAN SARCOMA VIRAL ONCOGENE HOMOLOG

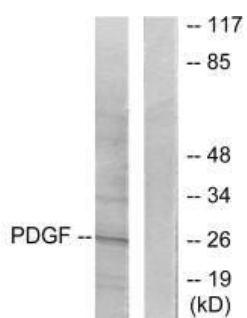
Immunogen:

Synthesized peptide derived from human PDGFB.

Storage:

Rabbit IgG in phosphate buffered saline (without Mg²⁺ and Ca²⁺), pH 7.4, 150mM NaCl, 0.02% sodium azide and 50% glycerol.

Product Images



Western blot analysis of extracts from NIH/3T3 cells, using PDGFB antibody.