

SMAD2 (Ab-465) Antibody



PACO21649

Product Information

Size:

100ul

Reactivity:

Human, Mouse, Rat

Source:

Rabbit

Isotype:

IgG

Applications:

ELISA, WB

Recommended dilutions:

ELISA:1:2000-1:10000, WB:1:500-1:3000

Protein Background:

Receptor-regulated SMAD (R-SMAD) that is an intracellular signal transducer and transcriptional modulator activated by TGF-beta (transforming growth factor) and activin type 1 receptor kinases. Binds the TRE element in the promoter region of many genes that are regulated by TGF-beta and, on formation of the SMAD2/SMAD4 complex, activates transcription. May act as a tumor suppressor in colorectal carcinoma. Positively regulates PDPK1 kinase activity by stimulating its dissociation from the 14-3-3 protein YWHAQ which acts as a negative regulator. Zhang Y. , Nature 383:168-172(1996) .

Gene ID:

SMAD2

Uniprot

Q15796

Synonyms:

JV18-1; Mad-related protein 2; MADH2; MADR2; Mothers against decapentaplegic homolog 2

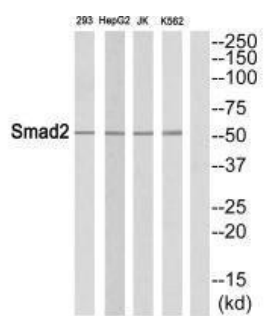
Immunogen:

Synthesized peptide derived from C-terminal of human Smad2.

Storage:

Rabbit IgG in phosphate buffered saline (without Mg²⁺ and Ca²⁺), pH 7.4, 150mM NaCl, 0.02% sodium azide and 50% glycerol.

Product Images



Western blot analysis of extracts from 293 cells, JurKat cells, HepG2 cells and K562 cells, using Smad2 (Ab-465) antibody.