

# HCLS1 (Ab-397) Antibody



PACO21633

---

## Product Information

**Size:**

100ul

**Reactivity:**

Human

**Source:**

Rabbit

**Isotype:**

IgG

**Applications:**

ELISA, WB

**Recommended dilutions:**

ELISA:1:2000-1:10000, WB:1:500-1:3000

**Protein Background:**

Substrate of the antigen receptor-coupled tyrosine kinase. Plays a role in antigen receptor signaling for both clonal expansion and deletion in lymphoid cells. May also be involved in the regulation of gene expression.

**Gene ID:**

HCLS1

**Uniprot**

P14317

**Synonyms:**

cortactin-like; CTTNL; HCLS1; Hematopoietic cell-specific LYN substrate 1; Hematopoietic lineage cell-specific protein

**Immunogen:**

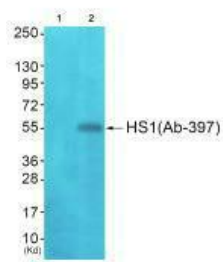
Synthesized peptide derived from C-terminal of human HCLS1.

**Storage:**

Rabbit IgG in phosphate buffered saline (without Mg<sup>2+</sup> and Ca<sup>2+</sup>), pH 7.4, 150mM NaCl, 0.02% sodium azide and 50% glycerol.

## Product Images

---



Western blot analysis of extracts from JK cells (Lane 2), using HS1 (Ab-397) antibody. The lane on the left is treated with synthesized peptide.