

HSF1 (Ab-142) Antibody



PACO21594

Product Information

Size:

100ul

Reactivity:

Human, Mouse

Source:

Rabbit

Isotype:

IgG

Applications:

ELISA, WB

Recommended dilutions:

ELISA:1:2000-1:10000, WB:1:500-1:3000

Protein Background:

DNA-binding protein that specifically binds heat shock promoter elements (HSE) and activates transcription. In higher eukaryotes, HSF is unable to bind to the HSE unless the cells are heat shocked. Ota T., Nat. Genet. 36:40-45(2004).

Gene ID:

HSF1

Uniprot

Q00613

Synonyms:

Heat shock factor protein 1; Heat shock transcription factor 1; HSF 1; HSTF 1; HSTF1

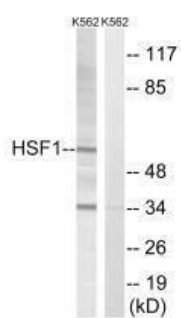
Immunogen:

Synthesized non-phosphopeptide derived from human HSF1 around the phosphorylation site of threonine 142 (L-L-T(p)-D-V).

Storage:

Rabbit IgG in phosphate buffered saline (without Mg²⁺ and Ca²⁺), pH 7.4, 150mM NaCl, 0.02% sodium azide and 50% glycerol.

Product Images



Western blot analysis of extracts from K562 cells, using HSF1 (Ab-142) antibody.