

CCDC106 Antibody



PACO21540

Product Information

Size:

100ul

Reactivity:

Human

Source:

Rabbit

Isotype:

IgG

Applications:

ELISA, WB

Recommended dilutions:

ELISA:1:2000-1:10000, WB:1:500-1:1000

Protein Background:

CCDC106 promotes the degradation of p53 protein and inhibits its transactivity.

Gene ID:

CCDC106

Uniprot

Q9BWC9

Synonyms:

CCDC106; ZNF581; HSU79303

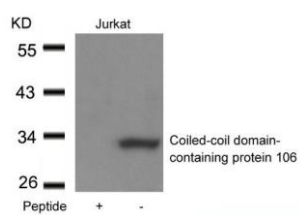
Immunogen:

Peptide sequence around aa.2~6 (N-D-R-S-S) derived from Human Coiled-coil domain-containing protein 106.

Storage:

Supplied at 1.0mg/mL in phosphate buffered saline (without Mg²⁺ and Ca²⁺), pH 7.4, 150mM NaCl, 0.02% sodium azide and 50% glycerol.

Product Images



Western blot analysis of extracts from Jurkat cells using Coiled-coil domain-containing protein 106 antibody and the same antibody preincubated with blocking peptide.