

JUP Antibody



PACO21533

Product Information

Size:

100ul

Reactivity:

Human, Rat

Source:

Rabbit

Isotype:

IgG

Applications:

ELISA, WB

Recommended dilutions:

ELISA:1:2000-1:10000, WB:1:500-1:1000

Protein Background:**Gene ID:**

JUP

Uniprot

P14923

Synonyms:

DP3; PDGB; PKGB; CTNNG; ARVD12

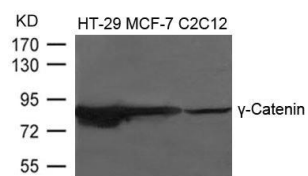
Immunogen:

Peptide sequence around aa.726~730(I-D-T-Y-S) derived from Human g-Catenin.

Storage:

Supplied at 1.0mg/mL in phosphate buffered saline (without Mg²⁺ and Ca²⁺), pH 7.4, 150mM NaCl, 0.02% sodium azide and 50% glycerol.

Product Images



Western blot analysis of extracts from HT-29, MCF-7 and C2C12 cells using γ-Catenin Antibody.