

PACO21531

---

## Product Information

**Size:**

100ul

**Reactivity:**

Human

**Source:**

Rabbit

**Isotype:**

IgG

**Applications:**

ELISA, WB

**Recommended dilutions:**

ELISA:1:2000-1:10000, WB:1:500-1:1000

**Protein Background:**

May play an important role in modulating bone turnover. Promotes the adhesion of osteoblast cells and inhibits the binding of fibrinogen to integrin receptors. In addition, inhibits osteocalcin production. Pennica D. , Swanson T. A. , Welsh J. W. J. Proc. Natl. Acad. Sci. U. S. A. 95:14717-14722(1998).

**Gene ID:**

WISP2

**Uniprot**

O76076

**Synonyms:**

CCN5; CT58; CTGF-L

**Immunogen:**

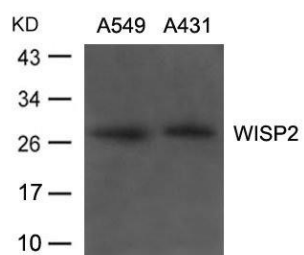
Peptide sequence around aa.242~246(G-R-S-P-Q) derived from Human WISP2.

**Storage:**

Supplied at 1.0mg/mL in phosphate buffered saline (without Mg<sup>2+</sup> and Ca<sup>2+</sup>), pH 7.4, 150mM NaCl, 0.02% sodium azide and 50% glycerol.

## Product Images

---



Western blot analysis of extracts from A549, A431 cells using WISP2 Antibody.