

# CCR5 Antibody



PACO21521

---

## Product Information

**Size:**

100ul

**Reactivity:**

Human

**Source:**

Rabbit

**Isotype:****Protein Background:****Gene ID:**

CCR5

**Uniprot**

P51681

**Synonyms:**

CKR5; CD195; CKR-5

**Applications:**

ELISA, WB

**Immunogen:**

Peptide sequence around aa.11~15(D-I-N-Y-Y) derived from Human CCR5(CD195).

**Recommended dilutions:**

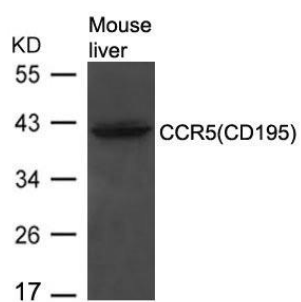
ELISA:1:2000-1:10000, WB:1:500-1:1000

**Storage:**

Supplied at 1.0mg/mL in phosphate buffered saline (without Mg<sup>2+</sup> and Ca<sup>2+</sup>), pH 7.4, 150mM NaCl, 0.02% sodium azide and 50% glycerol.

## Product Images

---



Western blot analysis of extracts from Mouse liver tissue using CCR5(CD195) Antibody.