

PACO21507

Product Information

Size:

100ul

Reactivity:

Human, Mouse, Rat

Source:

Rabbit

Isotype:**Protein Background:****Gene ID:**

WAS

Uniprot

P42768

Synonyms:

THC; THC1; IMD2

Applications:

ELISA, WB

Immunogen:

Peptide sequence around aa.289~293 (L-I-Y-D-F) derived from Human WASP.

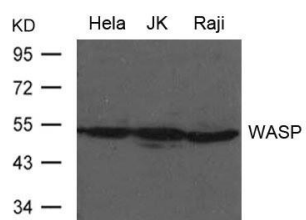
Recommended dilutions:

ELISA:1:2000-1:10000, WB:1:500-1:1000

Storage:

Supplied at 1.0mg/mL in phosphate buffered saline (without Mg²⁺ and Ca²⁺), pH 7.4, 150mM NaCl, 0.02% sodium azide and 50% glycerol.

Product Images



Western blot analysis of extract from HeLa, JK and Raji cells using WASP Antibody.