

# ID2 Antibody



PACO21495

---

## Product Information

**Size:**

100ul

**Reactivity:**

Human, Mouse, Rat

**Source:**

Rabbit

**Isotype:**

IgG

**Applications:**

ELISA, WB

**Recommended dilutions:**

ELISA:1:2000-1:10000, WB:1:500-1:1000

**Protein Background:**

ID (inhibitor of DNA binding) HLH proteins lack a basic DNA-binding domain but are able to form heterodimers with other HLH proteins, thereby inhibiting DNA binding. ID-2 may be an inhibitor of tissue-specific gene expression. The MGC Project TeamGenome Res. 14:2121-2127(2004).

**Gene ID:**

ID2

**Uniprot**

Q02363

**Synonyms:**

GIG8; ID2A; ID2H

**Immunogen:**

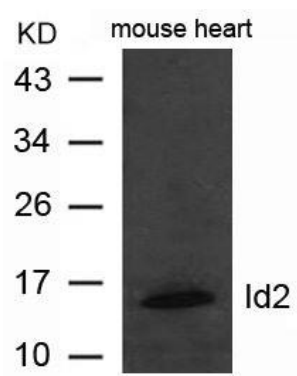
Peptide sequence around aa.5~9(S-P-V-R-S) derived from Human Id2.

**Storage:**

Supplied at 1.0mg/mL in phosphate buffered saline (without Mg<sup>2+</sup> and Ca<sup>2+</sup>), pH 7.4, 150mM NaCl, 0.02% sodium azide and 50% glycerol.

## Product Images

---



Western blot analysis of extract from mouse heart tissue using Id2 Antibody.