

SERPINI1 Antibody



PACO21493

Product Information

Size:

100ul

Reactivity:

Human, Mouse, Rat

Source:

Rabbit

Isotype:

IgG

Applications:

ELISA, WB

Recommended dilutions:

ELISA:1:2000-1:10000, WB:1:500-1:1000

Protein Background:

Serine protease inhibitor that inhibits plasminogen activators and plasmin but not thrombin. May be involved in the formation or reorganization of synaptic connections as well as for synaptic plasticity in the adult nervous system. May protect neurons from cell damage by tissue-type plasminogen activator. Davis R. L. , Shrimpton A. E. , Holohan P. D. Nature 401:376-379(1999).

Gene ID:

SERPINI1

Uniprot

Q99574

Synonyms:

PI12; SERPINI1;

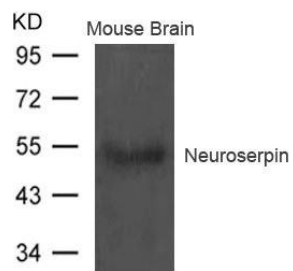
Immunogen:

Peptide sequence around aa.402~406(T-S-G-H-D) derived from Human Neuroserpin.

Storage:

Supplied at 1.0mg/mL in phosphate buffered saline (without Mg²⁺ and Ca²⁺), pH 7.4, 150mM NaCl, 0.02% sodium azide and 50% glycerol.

Product Images



Western blot analysis of extract from Mouse brain tissue using Neuroserpin Antibody.