

# TUBB3 Antibody



PACO21492

---

## Product Information

**Size:**

100ul

**Reactivity:**

Human, Mouse

**Source:**

Rabbit

**Isotype:**

IgG

**Applications:**

ELISA, WB

**Recommended dilutions:**

ELISA:1:2000-1:10000, WB:1:500-1:1000

**Protein Background:**

Tubulin is the major constituent of microtubules. It binds two moles of GTP, one at an exchangeable site on the beta chain and one at a non-exchangeable site on the alpha chain. TUBB3 plays a critical role in proper axon guidance and maintenance. Katsetos C. D., Legido A., Perentes E., Mork S. J. J. Child Neurol. 18:851-866(2003).

**Gene ID:**

TUBB3

**Uniprot**

Q13509

**Synonyms:**

TUBB4; CFEOM3A; TUBB3

**Immunogen:**

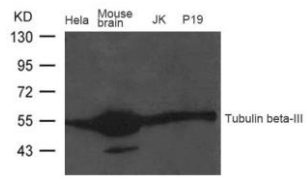
Peptide sequence around aa.442~446(E-E-S-E-A) derived from Human Tubulin b-III.

**Storage:**

Supplied at 1.0mg/mL in phosphate buffered saline (without Mg<sup>2+</sup> and Ca<sup>2+</sup>), pH 7.4, 150mM NaCl, 0.02% sodium azide and 50% glycerol.

## Product Images

---



Western blot analysis of extract from Mouse brain tissue, HeLa, JK and P19 cells using Tubulin beta-III Antibody.