

PACO21476

Product Information

Size:

100ul

Reactivity:

Human

Source:

Rabbit

Isotype:

IgG

Applications:

ELISA, WB

Recommended dilutions:

ELISA:1:2000-1:10000, WB:1:500-1:1000

Protein Background:

Integrin α -X/ β -2 is a receptor for fibrinogen. It recognizes the sequence G-P-R in fibrinogen. It mediates cell-cell interaction during inflammatory responses. It is especially important in monocyte adhesion and chemotaxis. Chen R. , Jiang X. , Sun D. , Han G. , Wang F. , Ye M. , Wang L. , Zou H. J. Proteome Res. 8:651-661(2009).

Gene ID:

ITGAX

Uniprot

P20702

Synonyms:

SLEB6; ITGAX;

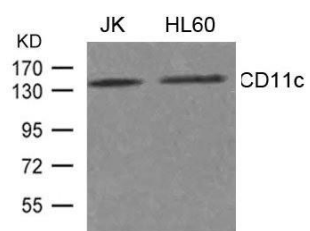
Immunogen:

Peptide sequence around aa.1155~1159(Q-T-P-S-P)derived from Human CD11c.

Storage:

Supplied at 1.0mg/mL in phosphate buffered saline (without Mg²⁺ and Ca²⁺), pH 7.4, 150mM NaCl, 0.02% sodium azide and 50% glycerol.

Product Images



Western blot analysis of extract from JK, HL-60 cells using CD11c Antibody.