

# CD209 Antibody



PACO21474

---

## Product Information

**Size:**

100ul

**Reactivity:**

Human

**Source:**

Rabbit

**Isotype:**

**Protein Background:**

**Gene ID:**

CD209

**Uniprot**

Q9NNX6

**Synonyms:**

CDSIGN; CLEC4L; DC-SIGN

**Applications:**

ELISA, WB

**Recommended dilutions:**

ELISA:1:2000-1:10000, WB:1:500-1:1000

**Immunogen:**

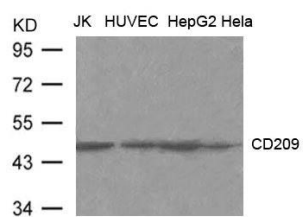
Peptide sequence around aa.389~393( E-Q-F-L-S )derived from Human CD209 (DC-SIGN).

**Storage:**

Supplied at 1.0mg/mL in phosphate buffered saline (without Mg<sup>2+</sup> and Ca<sup>2+</sup>), pH 7.4, 150mM NaCl, 0.02% sodium azide and 50% glycerol.

## Product Images

---



Western blot analysis of extract from JK, HUVEC, HepG2 and Hela cells using CD209(DC-SIGN) Antibody.