

PACO21458

Product Information

Size:

100ul

Reactivity:

Mouse, Rat

Source:

Rabbit

Isotype:

IgG

Applications:

ELISA, WB

Recommended dilutions:

ELISA:1:2000-1:10000, WB:1:500-1:1000

Protein Background:**Gene ID:**

Synpr

Uniprot

P22831

Synonyms:

Synpr

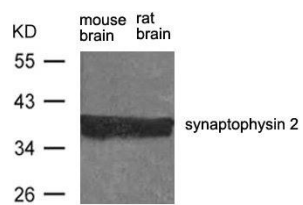
Immunogen:

Peptide sequence around aa.257~261(G-P-T-S-F)derived from Rat synaptophysin 2.

Storage:

Supplied at 1.0mg/mL in phosphate buffered saline (without Mg²⁺ and Ca²⁺), pH 7.4, 150mM NaCl, 0.02% sodium azide and 50% glycerol.

Product Images



Western blot analysis of extract from rat brain and mouse brain using synaptophysin 2 Antibody.