

Maged1 Antibody



PACO21424

Product Information

Size:

100ul

Reactivity:

Mouse, Rat

Source:

Rabbit

Isotype:**Protein Background:****Gene ID:**

Maged1

Uniprot

Q9QYH6

Synonyms:

MAGED1

Applications:

ELISA, WB

Recommended dilutions:

ELISA:1:2000-1:10000, WB:1:500-1:1000

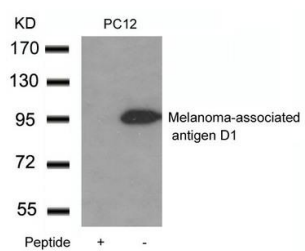
Immunogen:

Peptide with sequence C-EAEARAEARNRMGIGDE derived from Mouse Melanoma-associated antigen D1.

Storage:

Supplied at 1.0mg/mL in phosphate buffered saline (without Mg²⁺ and Ca²⁺), pH 7.4, 150mM NaCl, 0.02% sodium azide and 50% glycerol.

Product Images



Western blot analysis of extracts from PC12 cells using Melanoma-associated antigen D1 Antibody and the same antibody preincubated with blocking peptide.