

LYVE1 Antibody



PACO21423

Product Information

Size:

100ul

Reactivity:

Human, Mouse, Rat

Source:

Rabbit

Isotype:**Applications:**

ELISA, WB

Recommended dilutions:

ELISA:1:2000-1:10000, WB:1:500-1:1000

Protein Background:**Gene ID:**

LYVE1

Uniprot

Q9Y5Y7

Synonyms:

LYVE1

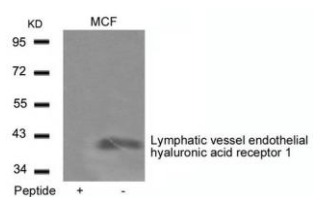
Immunogen:

Peptide sequence around aa.271~275 (K-N-Q-Q-K) derived from Human Lymphatic vessel endothelial hyaluronic acid, receptor 1.

Storage:

Supplied at 1.0mg/mL in phosphate buffered saline (without Mg²⁺ and Ca²⁺), pH 7.4, 150mM NaCl, 0.02% sodium azide and 50% glycerol.

Product Images



Western blot analysis of extracts from MCF cells using Lymphatic vessel endothelial hyaluronic acid receptor 1 Antibody and the same antibody preincubated with blocking peptide.