

OPRM1 (Ab-375) Antibody



PACO21419

Product Information

Size:

100ul

Reactivity:

Human, Mouse, Rat

Source:

Rabbit

Isotype:

IgG

Applications:

ELISA, WB

Recommended dilutions:

ELISA:1:2000-1:10000, WB:1:500-1:1000

Protein Background:

Inhibits neurotransmitter release by reducing calcium ion currents and increasing potassium ion conductance. Receptor for beta-endorphin. Rodr.

Gene ID:

OPRM1

Uniprot

P35372

Synonyms:

MOR; MUOR1; Mu-type opioid receptor; OPRM; OPRM1

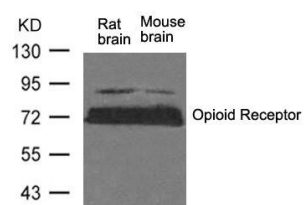
Immunogen:

Peptide sequence around aa.373~377 (H-P-S-T-A) derived from Human Opioid Receptor.

Storage:

Supplied at 1.0mg/mL in phosphate buffered saline (without Mg²⁺ and Ca²⁺), pH 7.4, 150mM NaCl, 0.02% sodium azide and 50% glycerol.

Product Images



Western blot analysis of extracts from Rat brain and Mouse brain tissue using Opioid Receptor(Ab-375) Antibody.