

# CREB1 (Ab-142) Antibody



PACO21417

---

## Product Information

**Size:**

100ul

**Reactivity:**

Human, Mouse, Rat

**Source:**

Rabbit

**Isotype:**

**Protein Background:**

**Gene ID:**

CREB1

**Uniprot**

P16220

**Synonyms:**

CREB-1; CREB1;

**Applications:**

ELISA, IHC

**Immunogen:**

Peptide sequence around aa.140~144 (D-L-S-S-D) derived from Human CREB.

**Recommended dilutions:**

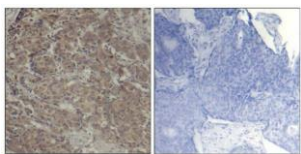
ELISA:1:2000-1:10000, IHC:1:50-1:100

**Storage:**

Supplied at 1.0mg/mL in phosphate buffered saline (without Mg<sup>2+</sup> and Ca<sup>2+</sup>), pH 7.4, 150mM NaCl, 0.02% sodium azide and 50% glycerol.

## Product Images

---



Immunohistochemical analysis of paraffin-embedded human breast carcinoma tissue using CREB(Ab-142) Antibody(left) or the same antibody preincubated with blocking peptide(right).