

# GABRB1 (Ab-434) Antibody



PACO21394

---

## Product Information

**Size:**

100ul

**Reactivity:**

Human, Mouse, Rat

**Source:**

Rabbit

**Isotype:**

IgG

**Applications:**

ELISA, WB

**Recommended dilutions:**

ELISA:1:2000-1:10000, WB:1:500-1:1000

**Protein Background:**

The gamma-aminobutyric acid, (GABA) A receptor is a multisubunit chloride channel that mediates the fastest inhibitory synaptic transmission in the central nervous system. This gene encodes GABA A receptor, beta 1 subunit. It is mapped to chromosome 4p12 in a cluster comprised of genes encoding a 4, a 2 and gamma 1 subunits of the GABA A receptor. Alteration of this gene is implicated in the pathogenetics of schizophrenia. Ma DQ, et al. (2005) Am J Hum Genet ;77(3):377-388.

**Gene ID:**

GABRB1

**Uniprot**

P18505

**Synonyms:**

GABA(A) receptor; GABA(A)R beta-1; GBRB1; GABA-RB;

**Immunogen:**

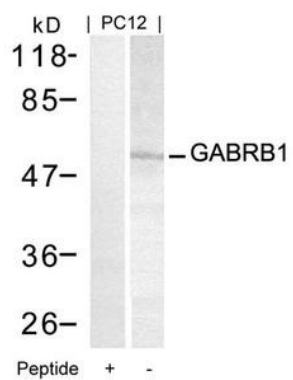
Peptide sequence around aa.432~436 (R-A-S-Q-L) derived from Human GABRB1.

**Storage:**

Supplied at 1.0mg/mL in phosphate buffered saline (without Mg<sup>2+</sup> and Ca<sup>2+</sup>), pH 7.4, 150mM NaCl, 0.02% sodium azide and 50% glycerol.

## Product Images

---



Western blot analysis of extracts from PC12 cells using GABRB1(Ab-434) Antibody and the same antibody preincubated with blocking peptide.