

PACO21339

Product Information

Size:

100ul

Reactivity:

Human, Mouse, Rat

Source:

Rabbit

Isotype:

IgG

Applications:

ELISA, WB

Recommended dilutions:

ELISA:1:2000-1:10000, WB:1:500-1:1000

Protein Background:

Electron carrier protein Plays a role in apoptosis. Suppression of the anti-apoptotic members or activation of the pro-apoptotic members of the Bcl-2 family leads to altered mitochondrial membrane permeability resulting in release of cytochrome c into the cytosol. Binding of cytochrome c to Apaf-1 triggers the activation of caspase-9, which then accelerates apoptosis by activating other caspases.

Gene ID:

CYCS

Uniprot

P99999

Synonyms:

CYC, HCS, THC4,

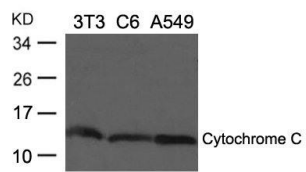
Immunogen:

Peptide sequence around aa.71-75(N-P-K-K-Y) derived from Human Cytochrome C.

Storage:

Purified Rabbit polyclonal in PBS(pH 7.4) containing with 0.02% sodium azide and 50% glycerol.

Product Images



Western blot analysis of extracts from 3T3, C6 and A549 cells using Cytochrome C Antibody.