

MMP9 Antibody



PACO21332

Product Information

Size:

100ul

Reactivity:

Human

Source:

Rabbit

Isotype:

IgG

Applications:

ELISA, WB

Recommended dilutions:

ELISA:1:2000-1:10000, WB:1:500-1:1000

Protein Background:

May play an essential role in local proteolysis of the extracellular matrix and in leukocyte migration. Could play a role in bone osteoclastic resorption. Cleaves KiSS1 at a Gly-|-Leu bond. Cleaves type IV and type V collagen into large C-terminal three quarter fragments and shorter N-terminal one quarter fragments. Degrades fibronectin but not laminin or Pz-peptide.

Gene ID:

MMP9

Uniprot

P14780

Synonyms:

GELB, CLG4B, MMP-9, MANDP2

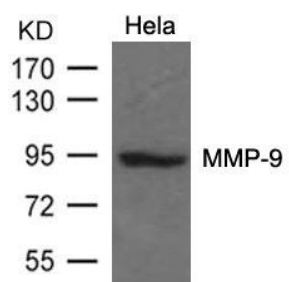
Immunogen:

Peptide sequence around aa.110-114(F-E-G-D-L) derived from Human MMP-9.

Storage:

Purified Rabbit polyclonal in PBS(pH 7.4) containing with 0.02% sodium azide and 50% glycerol.

Product Images



Western blot analysis of extracts from HeLa cells using MMP-9 Antibody.