

### Product Information

**Size:**

100ul

**Reactivity:**

Human, Mouse, Rat

**Source:**

Rabbit

**Isotype:**

IgG

**Applications:**

ELISA, WB

**Recommended dilutions:**

ELISA:1:2000-1:10000, WB:1:500-1:2000

**Protein Background:**

This gene encodes a protein that is similar to some members of the ERM (ezrin, radixin, moesin) family of proteins that are thought to link cytoskeletal components with proteins in the cell membrane. This gene product has been shown to interact with cell-surface proteins, proteins involved in cytoskeletal dynamics and proteins involved in regulating ion transport.

**Gene ID:**

NF2

**Uniprot**

P35240

**Synonyms:**

MERL; moesin-ezrin-radixin-like protein; neurofibromatosis type 2 gene; neurofibromatosis-2; Neurofibromin 2; NF-2; NF2; SCH; Schwannomerlin; schwannomerlin; Schwannomin

**Immunogen:**

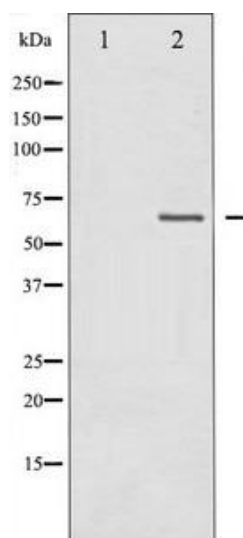
A Synthesized peptide derived from human Merlin.

**Storage:**

Rabbit IgG in phosphate buffered saline , pH 7.4, 150mM NaCl, 0.02% sodium azide and 50% glycerol.

## Product Images

---



Western blot analysis of Merlin expression in IFN-alpha treated HuvEc whole cell lysates, The lane on the left is treated with the antigen-specific peptide.