

Product Information

Size:

100ul

Reactivity:

Human, Mouse, Rat

Source:

Rabbit

Isotype:

IgG

Applications:

ELISA, WB, IF/ICC

Recommended dilutions:

ELISA:1:2000-1:10000, WB:1:500-1:2000,
IF: ICC:1:50-1:500

Protein Background:

The proto-oncogene MET product is the hepatocyte growth factor receptor and encodes tyrosine-kinase activity. The primary single chain precursor protein is post-translationally cleaved to produce the alpha and beta subunits, which are disulfide linked to form the mature receptor. .

Gene ID:

MET

Uniprot

P08581

Synonyms:

EC 2.7.10.1, HGF receptor, HGF-SF receptor, Hepatocyte growth factor receptor precursor, Met proto- oncogene tyrosine kinase, c-met, kinase EC 2.7.10.1, HGF receptor, HGF-SF receptor, Hepatocyte growth factor receptor precursor, Met proto-oncogene tyros

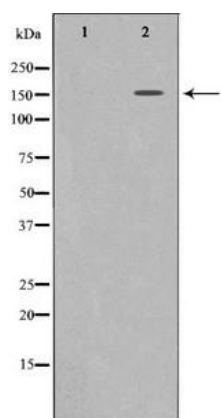
Immunogen:

A Synthesized peptide derived from human c-Met.

Storage:

Rabbit IgG in phosphate buffered saline , pH 7.4, 150mM NaCl, 0.02% sodium azide and 50% glycerol.

Product Images



Western blot analysis of c-Met expression in HepG2 whole cell lysates, The lane on the left is treated with the antigen-specific peptide.